



THE CLIENT

As a leading manufacturer of microscopes, the client offers inspiring solutions and services for Life Sciences and materials research, teaching and clinical routine. Their reliable systems are used for manufacturing and assembly in high-tech industries as well as exploration and processing of raw materials all over the world.

THE BRIEF

Guardtech had built the first cleanroom for this client back in the year 2010 and have been maintaining and validating this quality controlled environment ever since. However, with a relocation to a larger modern facility, a new cleanroom was required and Guardtech were tasked with the design and build of a controlled environment with an extended brief of mechanical and electrical services, alongside a number of customised transfer solutions.



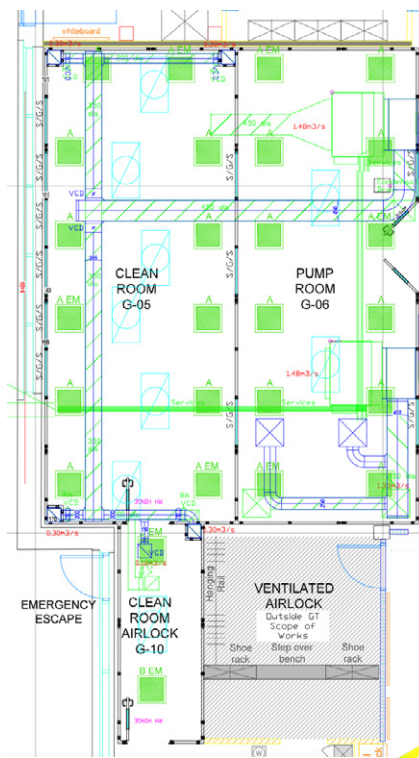
Optics



21C+/-2 & 30-70% RH



80m²



“The build went smoothly, even with some complex challenges to overcome...”

“Guardtech were commissioned to build an ISO7 cleanroom within our relocated manufacturing facility. They were selected on the basis of their proactive and collaborative approach towards design and the fact that they could deliver a complete turnkey solution from design to commissioning.

“The installation team were diligent, helpful and friendly and the build went smoothly, even with some complex challenges to overcome, such as an ultra-low headroom crane to accommodate and a bespoke transfer system to build into the fabric of the room.”

THE CLIENT
ISO7 Microscopy Cleanroom



ISO7 MICROSCOPY



Guardian House
Unit 1A Homefield Road,
Haverhill, CB9 8QP
0330 113 0303
sales@guardtech.com
www.guardtechcleanrooms.com



THE FIT-OUT

The Guardware team demonstrated our comprehensive and bespoke capabilities with a custom-made crane system. To allow maximum standards of quality and efficiency in production, Zeiss needed their crane to travel in all directions on the X and Y axis. An ultra-low headroom crane was custom-designed and manufactured, so the client could continue to innovate despite height restrictions, heavy load and the required clearance of the hoist.

Transfer system: to continue the client's need for seamless production across their space, Guardware designed and manufactured 12 bespoke stainless steel trolleys and an air shower pass-through hatch with rollers. The trolleys had specialised roller systems so they could be locked off, and docking mechanisms so they could line up to the transfer hatch with precision. To maximise space for their processes, the transfer hatch had interlocked sliding vertical doors and

an internal roller system which could also be braked. All practical solutions by Guardware ensured the client's manufacturing could easily move with stability and precision between the cleanroom and adjoining pump room.

The client said: "We have a passion for excellence and Guardware simplifies any challenges so we can continue to drive progress in optics and optoelectronics."

The project manager had a very good handle on the whole process and we were well communicated to throughout," the client said.

"The team were flexible when it came to accommodating on the job changes and we ended up with a cleanroom of very high quality and good value for money."

"Overall, I was very impressed with Guardtech throughout the project and would highly recommend them as a cleanroom provider."

