

SEALWISE BENCHES FIT-OUT



Grade C

NHS

Gloucestershire Health and Care
NHS Foundation Trust



Press play for video content



THE CLIENT

Gloucestershire Hospitals NHS Foundation Trust – formed from Gloucestershire Hospitals NHS Trust, which was established following a reconfiguration of health services in Gloucestershire in 2002. The Trust provides acute hospital services from two large district general hospitals, Cheltenham General Hospital (CGH) and Gloucestershire Royal Hospital (GRH). In this instance, it was the Trust's aseptic pharmacy team that required a cleanroom solution.



Pharmaceuticals



20+/-3C
50+/-10% RH



210m²

THE BRIEF

The client had an urgent and rapid requirement for a GMP Grade C aseptic compounding cleanroom environment for the production and handling of chemotherapy pharmaceuticals. After a thorough consultation with the client and site survey of a proposed location, Guardtech recommended a Cleancube Maxi-4 base footprint with three annexed 20ft Mini units to serve as ancillary areas for material access lobby and store as well as a separate Cleancube Plant Skid.



This aseptic pharmacy Cleancube features a full Sealwise workbench fit-out – combining elite performance and aesthetics.

“A complex project to help deliver critical medicine...”

Guardtech Project Manager Florence Whitehead said: “The project undoubtedly challenged us from every angle – there were so many complexities to the design, engineering innovations to ensure compliance and peak operational functionality, as well as the requirement to deliver a solution as quickly as possible. “I want to pay tribute to everyone involved in making this happen – it was a huge project to undertake but the Guardtech family really pulled together to overcome a number of hurdles along the way.”

Florence Whitehead
Guardtech Project Manager



Guardware
cleanroom hardware

SEALWISE BENCHES



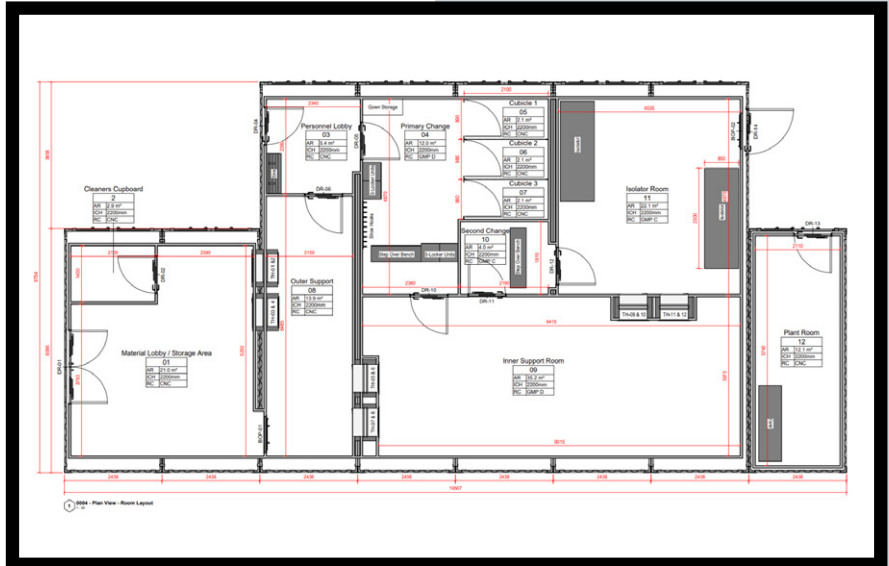
GT Shell official panel system partner:



THE FURNITURE

A Cleancube container controlled environment facility designed, installed, cleaned and commissioned by Guardtech, featuring a dedicated Guardware furniture & equipment fit-out that included the following items:

- Furniture & Equipment:** 13 x fitted work benches (two with fitted extraction) with grade 304 stainless steel frame and Sealwise WCB top with upstands, 2-tier cleanroom 304 stainless steel trolley with braking castors, grade 304 stainless steel waste bin with swing lid and removable top adjustable levelling feet, grade 304 stainless steel wired storage racking, eye-wash station, foot-operated 75-litre pedal bin with lid and bag-clamping band, full length grade 304 stainless steel polished finish mirror, mild steel lockers with sloping roof, internal shelf and lockable doors, 304 stainless steel multi-purpose dispenser with vision slots, grade 304 stainless steel stepover bench with 6 compartments and adjustable levelling feet, grade 304 stainless



steel wall-mounted clog rack, 304 stainless steel wall-mounted coat hook rack, grade 304 stainless steel cubicle bench with box section frame and adjustable levelling feet, hazardous substance COSHH cupboard with 3 perforated shelves, stainless steel grade 304 high back wash trough with 2 sensor taps, high back floor standing wash trough with sensor operated hand dryer, sensor soap dispensers and sensor taps.

THE FIT-OUT

The installation of 13 bespoke Sealwise workbenches formed a critical part of the aseptic pharmacy's internal workflow, providing robust, hygienic and compliant work surfaces across key operational areas. Each bench was constructed with a grade 304 stainless steel frame and integrated upstands, ensuring durability, cleana-

SEALWISE BENCHES

Contact Us



Guardian House
Unit 1A Homefield Road,
Haverhill, CB9 8QP

0330 113 0303

sales@guardtech.com

www.guardtechgroup.com



bility and seamless integration into the GMP Grade C environment . Two of the units were also fitted with local extraction, supporting safe handling of cleaning agents and hazardous substances while protecting operators and maintaining environmental control. At the heart of each workstation is the Sealwise Wood Composite Board (WCB) surface, a material specifically engineered for demanding cleanroom and laboratory applications.

Unlike traditional laminates or solid surfaces, Sealwise WCB is fully encapsulated and waterproof, meaning it will not swell, delaminate or degrade when exposed to moisture, aggressive cleaning regimes or chemical agents. Its non-porous, impervious construction prevents bacterial ingress and supports stringent decontamination protocols, making it particularly well-suited to aseptic pharmaceutical environments where hygiene and contamination control are paramount.

In a facility dedicated to the preparation of chemotherapy drugs, where frequent cleaning and strict compliance with EU GMP Annex 1 are essential, the choice of Sealwise WCB delivers long-term performance and reliability. The combination of chemical resistance, impact durability and easy-to-clean surfaces ensures the benches can withstand inten-



sive daily use without compromising cleanliness standards. As a result, these workbenches not only support operational efficiency but also play a vital role in maintaining the integrity of the cleanroom environment and safeguarding both product and patient outcomes.

THE RESULT

Guardtech Project Manager Florence Whitehead said: "Being part of such a major project for our beloved NHS – and helping provide this Trust with a solution to support their critical work for

cancer patients – was an incredibly rewarding experience for me personally.

"The project undoubtedly challenged us from every angle – there were so many complexities to the design, engineering innovations to ensure compliance and peak operational functionality, as well as the requirement to deliver a solution as quickly as possible.

"I want to pay tribute to everyone involved in making this happen – it was a huge project to undertake but the Guardtech family really pulled together to overcome a number of hurdles along the way."